

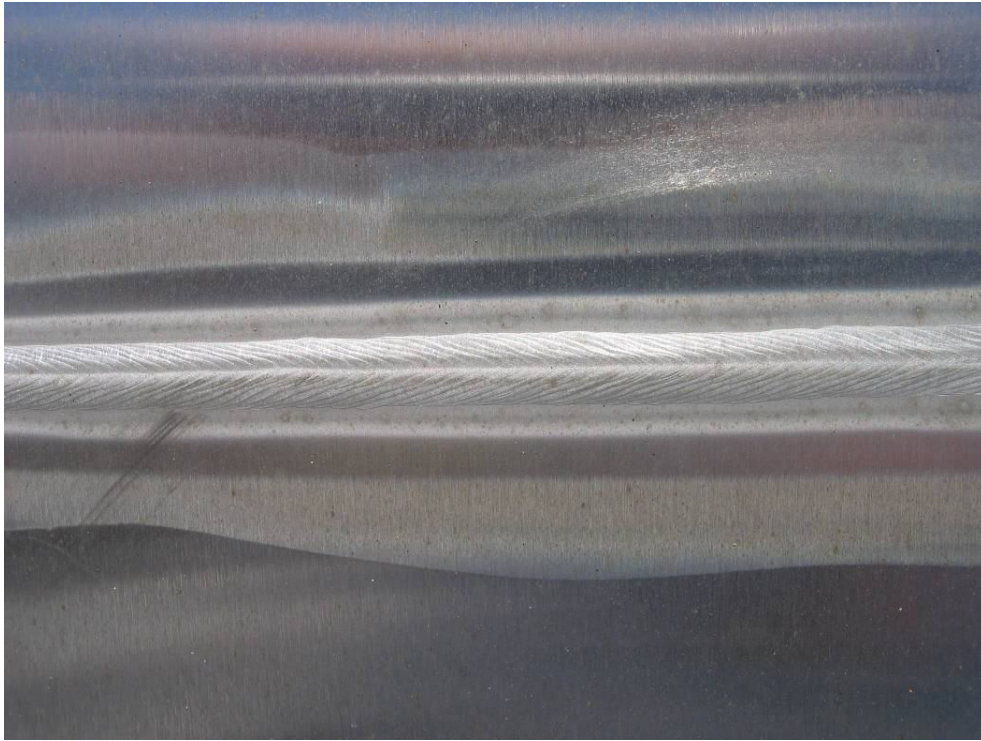
Visual assessment of welded samples exposed at Muriwai Beach – Preliminary test results

Confidential

On 23rd January 2009 a set of welded stainless steel samples was mounted on a wooden rack at the Muriwai Beach testing site. The first inspection of samples took place on 17th June 09. Below are some photos showing the test set-up and welded area of samples after exposure.



Position of test samples on a wooden rack at an angle of 30 degrees



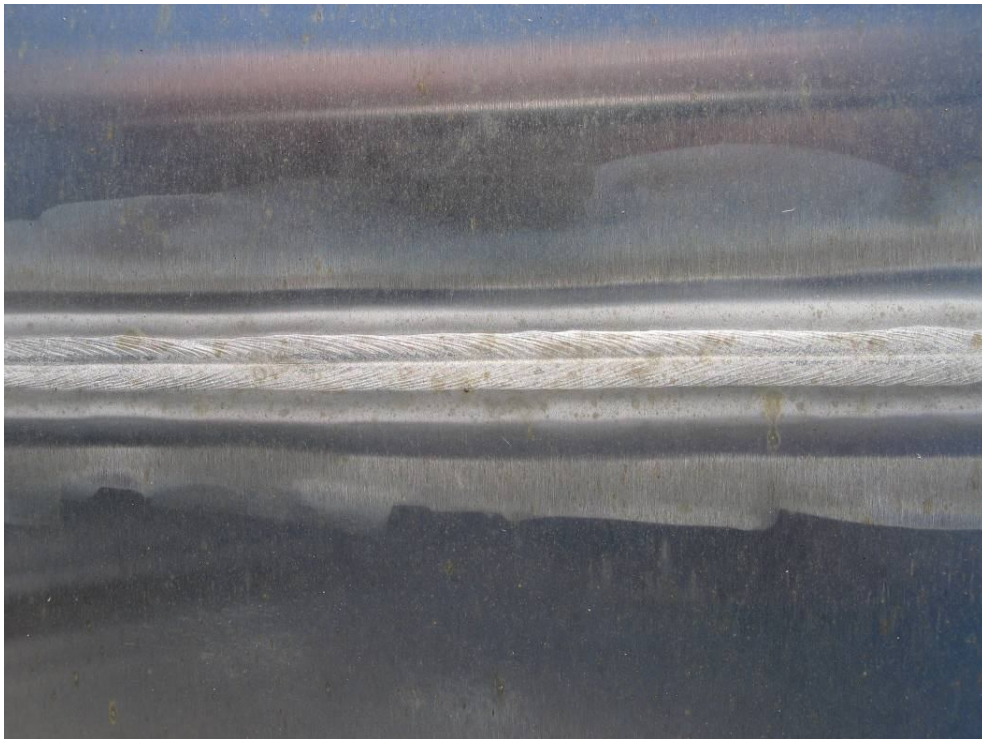
Grade 316, satin finish with 120-grit belt, TIG welded, filler: 316L



Grade 445M2, satin finish with 120-grit belt, TIG welded, filler 316L



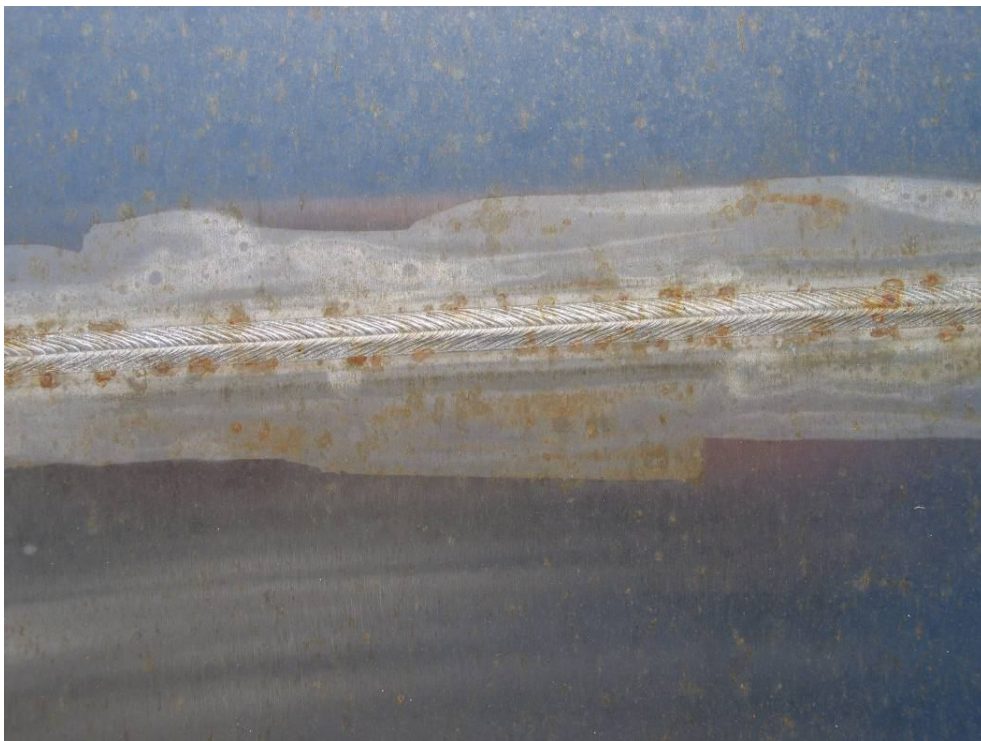
Grade LDX 2101, satin finish with 120-grit belt, TIG welded, filler: Sandvik 22.8.3L



Grade 304, satin finish with 120-grit belt, TIG welded, filler: 308L



Grade 404GP, satin finish with 120-grit belt, TIG welded, filler: 308L



Grade 430, satin finish with 120-grit belt, TIG welded, filler: 308L



Grade J4, satin finish with 120-grit belt, TIG welded, filler: 308L