



TABLE OF CONTENTS

Swaged Series

3

Bar Grating

4

Rectangular Bar

4

Serrated Bar

5

I Bar

6

T Bar

7

Flush Top

8

Press Locked

9

Load Table

10

Application Display

11

Architectural Louver

15

Sunscreen Louver

16

Trafficable Louver

17

Load Table

18

Application Display

19

Stair Tread

25

Application Display

26

Expanded Series

27

Expanded Walkway

28

Planking

29

Load Table

30

Application Display

31

Stanchion

33

Application Display

34

Steel Grating

41

Bar Grating

42

V Shape

44

Application Display

45

Load Table

46

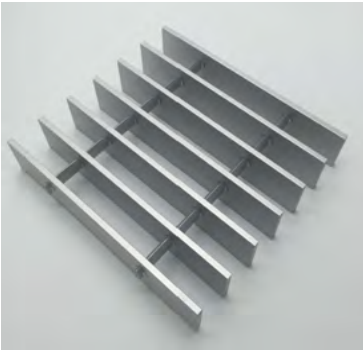
Swaged Series

Bar Grating, Architectural Louver & Stair Tread

ALUMINUM BAR GRATING

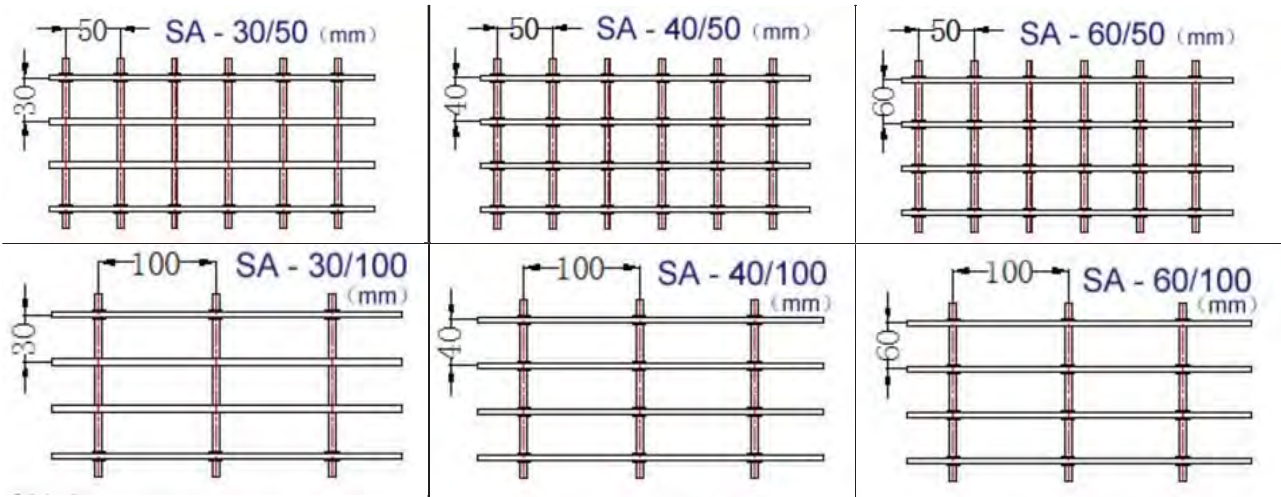
Rectangular Bar

Swaged aluminum grating is widely used in a large range of industrial & commercial applications. It is assembled by permanently attaching cross bars to bearing bars through a high hydraulic pressure swaging process. The finished product is both functionally durable and aesthetically pleasing. Aluminum grating is light weight, high strength and corrosion free which makes it a sought after alternative product.



Applications		
platform	building facade	fencing
walkway	sunscreen	sunshade
trench grate	grille	stair tread
Surfaces		
flat		
Surface Treatments		
mill finish	anodizing	powder coating

Standard Product Profiles



The SA Series rectangular bar type is the most widely used aluminum swaged grating.



ALUMINUM BAR GRATING

Serrated Bar



Applications

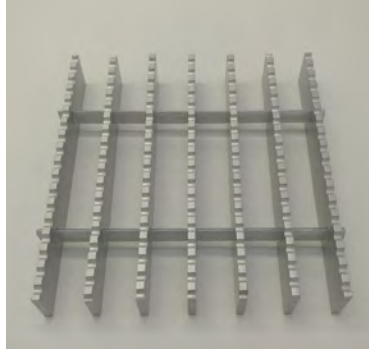
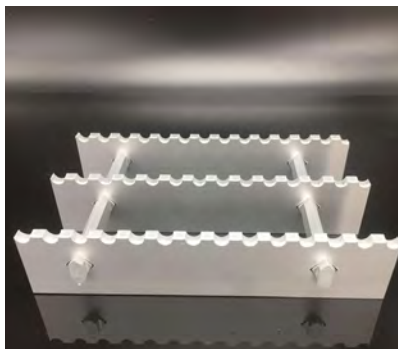
railing infill	shelving	fencing
trench grate	platform	walkway

Surfaces

serrated

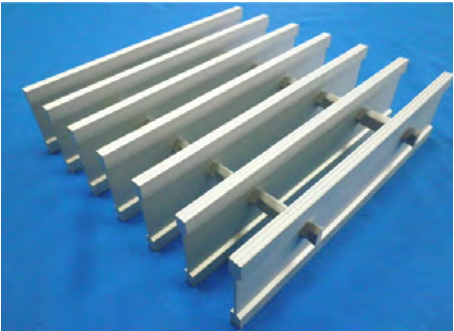
Surface Treatments

mill finish	anodizing	powder coating
-------------	-----------	----------------



ALUMINUM BAR GRATING

I Bar



Applications

railing infill	shelving	fencing
trench grate	platform	walkway

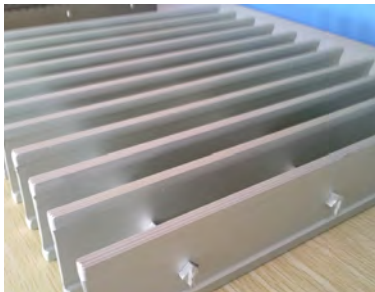
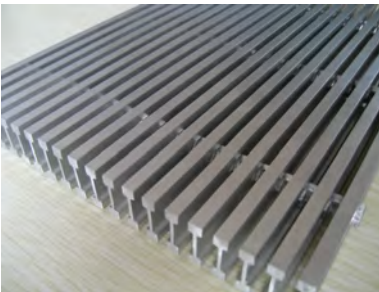
Surfaces

flat	striated
------	----------

Surface Treatments

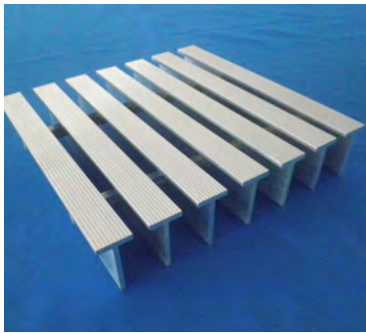
mill finish	anodizing	powder coating
-------------	-----------	----------------

The I-bar grating is manufactured with highly efficient extruded I shaped bearing bars. It is an economical alternative to the rectangular flat bar grating with the same load capacity. The striated top and bottom flanges offer an build-in slip resistant surface ideal for wheel and heel protection.



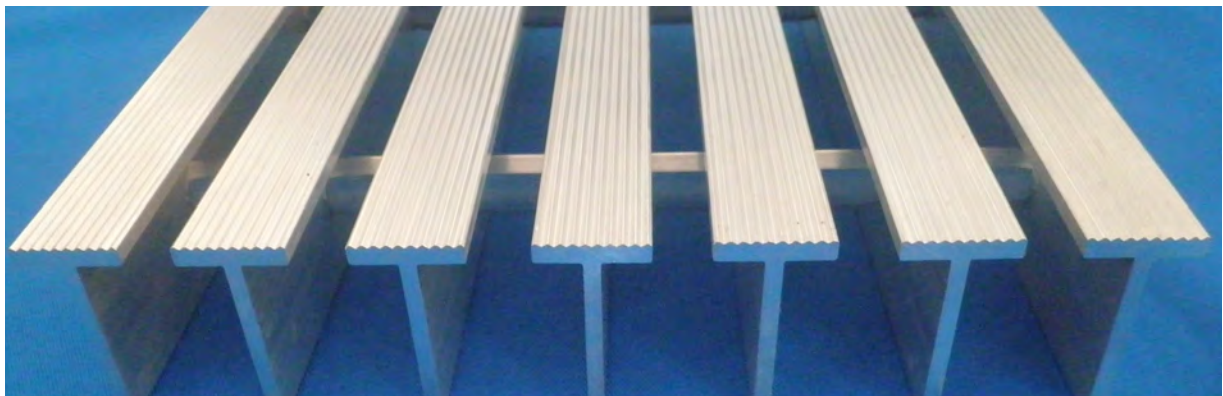
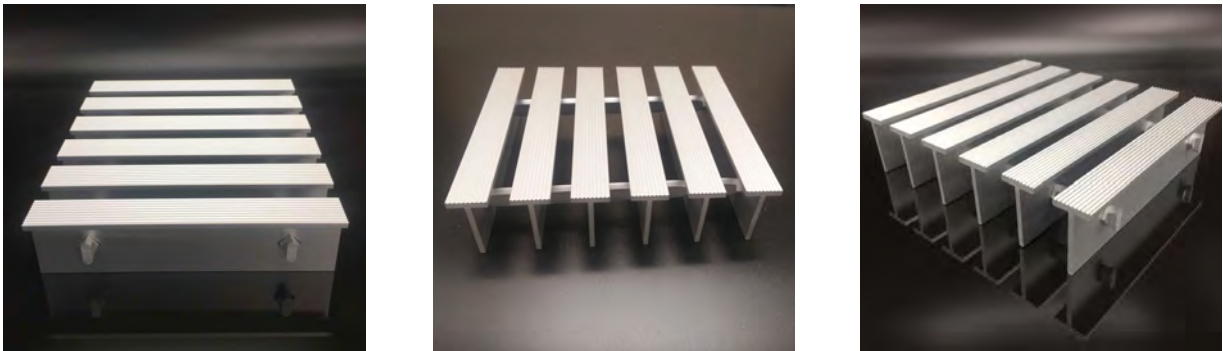
ALUMINUM BAR GRATING

T Bar



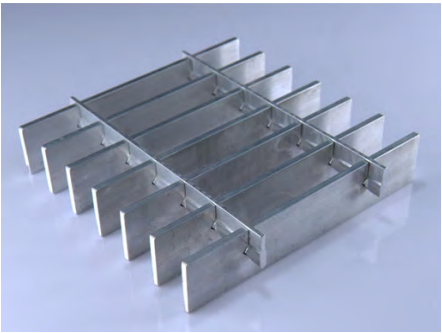
Applications		
trench grate	platform	walkway
Surfaces		
flat	striated	
Surface Treatments		
mill finish	anodizing	powder coating

The T-bar grating manufactured with extruded T shaped bearing bars has larger supporting area for extra underfoot comfort and striated surface for added slip resistance.



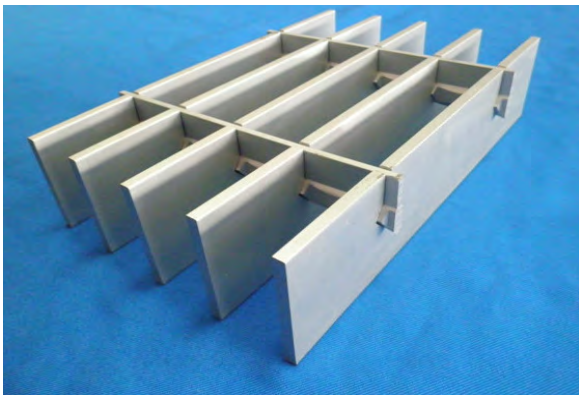
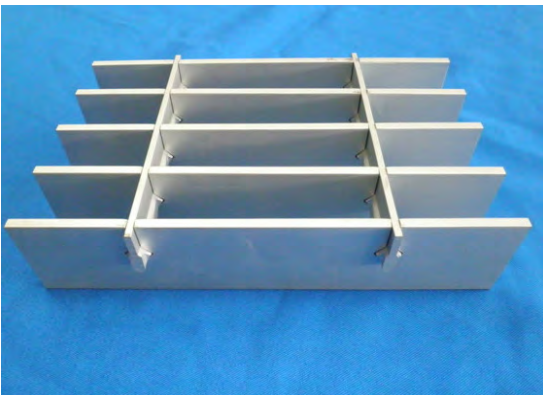
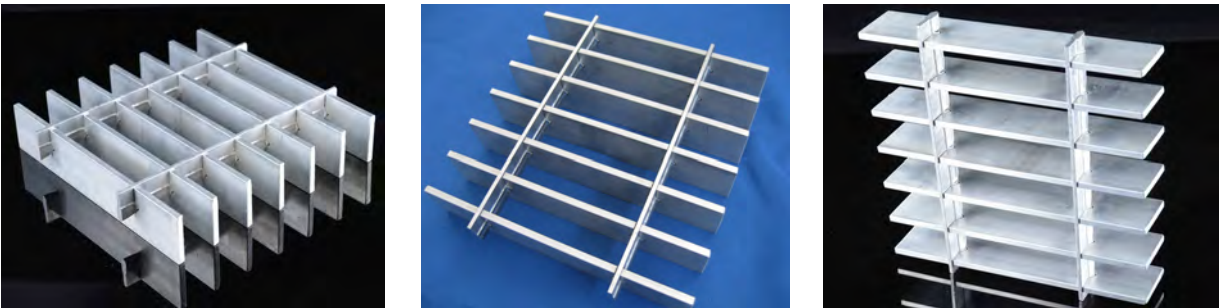
ALUMINUM BAR GRATING

Flush Top



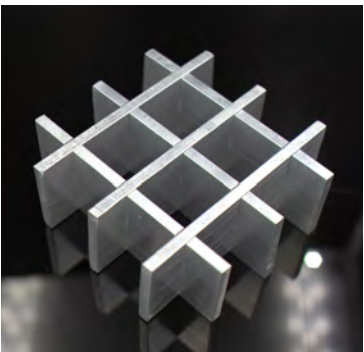
Applications		
railing infill	shelving	fencing
trench grate	platform	walkway
Surfaces		
flat	serrated	
Surface Treatments		
mill finish	anodizing	powder coating

The diamond shaped cross bars are flush with bearing bars and are also permanently locked in by a hydraulic pressured swaging process. Serrated surface is available for added skid resistance.



ALUMINUM BAR GRATING

Press Locked



Applications

passage ceiling fencing
walkway platform building facade

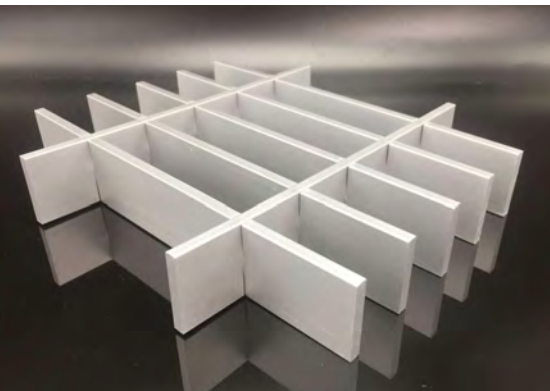
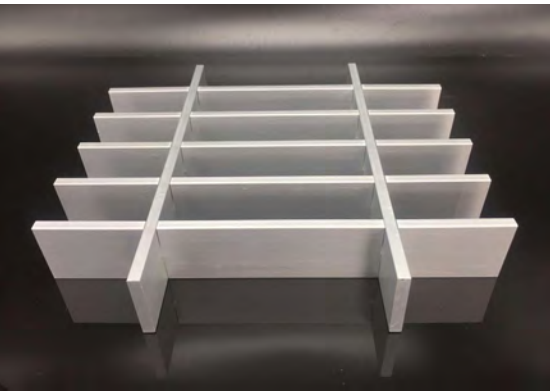
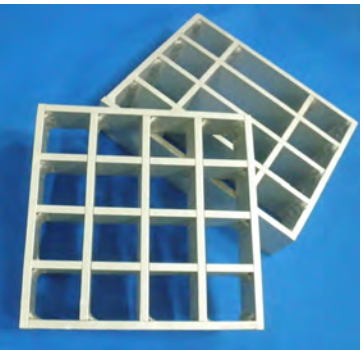
Surfaces

flat serrated

Surface Treatments

mill finish anodizing powder coating

The press locked grating is made with pre-punched bearing bars and flush top cross bars fitted seamlessly together under hydraulic pressure. It has a greater load capacity than regular swaged bar grating and zero welding point offering a more elegant appearance than press-welded grating.



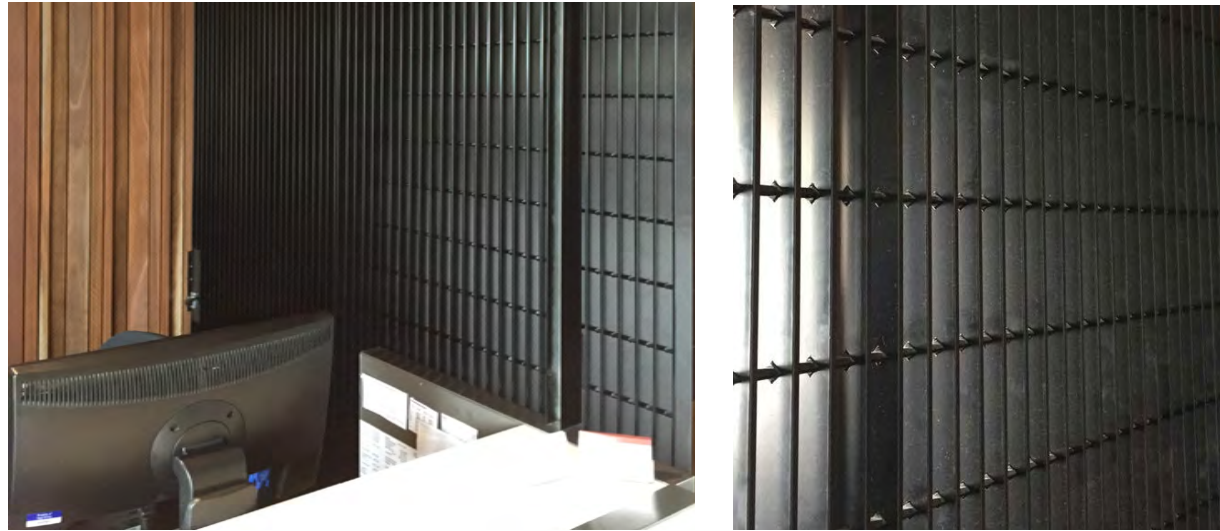
ALUMINUM BAR GRATING

Load Table

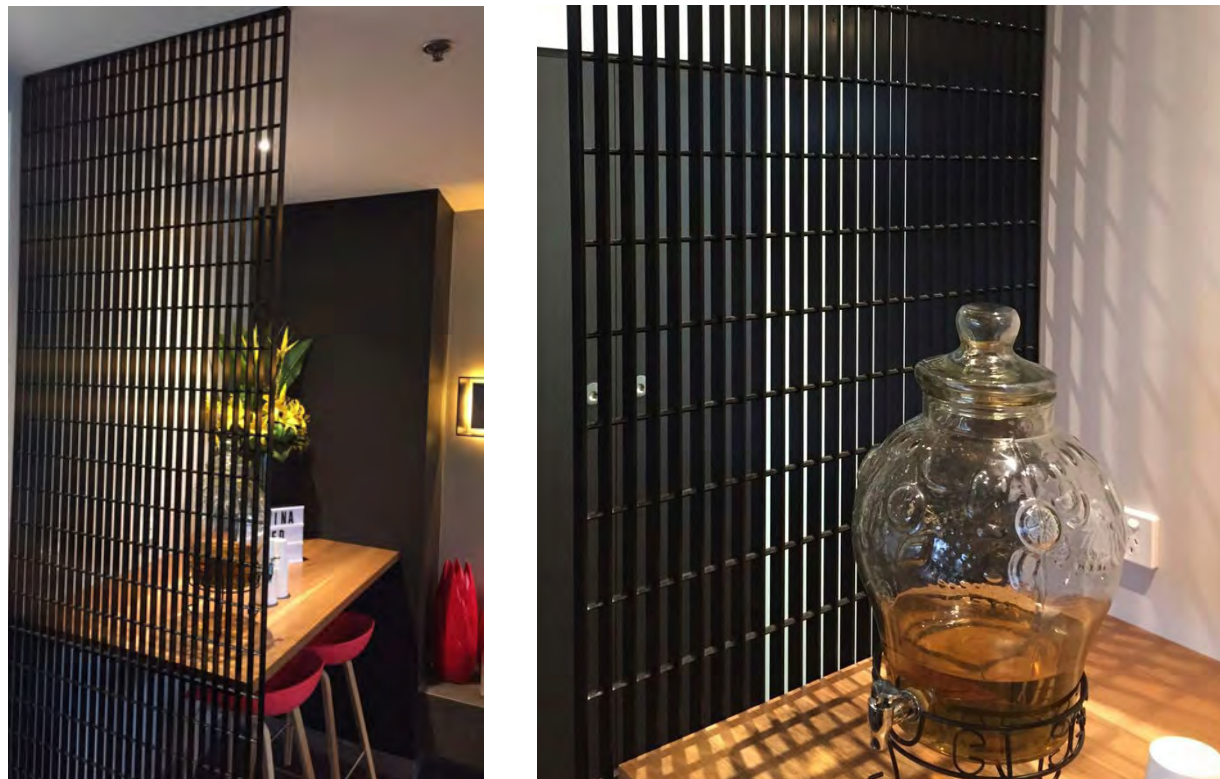
ALUMINIUM GRATING																		
Product	Load Bar Size mm	Load Bar Spacing mm	Mass kg/m	4 kpa 5mm Defl span		SPAN(mm)												
						450	600	750	900	1050	1200	1350	1500	1800	2100	2400	2700	3000
SA253P	25 x 3	60	7.0	750	U(kPa)	24.1	13.6	8.7	6.0	4.4	3.4	2.7	2.2	1.5	1.1	0.8	0.7	0.5
					D(mm)	2.8	5.0	7.8	11.2	15.2	19.9	25.2	31.1	44.8	61.0	79.7	100.8	124.5
SA253P	25 x 3	40	7.0	890	U(kPa)	35.5	20.0	12.8	8.9	6.5	5.0	3.9	3.2	2.2	1.6	1.2	1.0	0.8
					D(mm)	2.8	5.0	7.8	11.2	15.2	19.9	25.2	31.1	44.8	61.0	79.7	100.8	124.5
SA253S	25 x 3	30	8.4	900	U(kPa)	38.1	21.5	13.7	9.5	7.0	5.4	4.2	3.4	2.4	1.8	1.3	1.1	0.9
					D(mm)	2.5	4.4	6.9	9.9	13.5	17.6	22.3	27.5	39.6	54.0	70.5	89.2	110.1
SA253P	25 x 3	30	8.7	950	U(kPa)	48.3	27.2	17.4	12.1	8.9	6.8	5.4	4.3	3.0	2.2	1.7	1.3	1.1
					D(mm)	2.8	5.0	7.8	11.2	15.2	19.9	25.2	31.1	44.8	61.0	79.7	100.8	124.5
SA255P	25 x 5	40	10.5	1010	U(kPa)	59.2	33.3	21.3	14.8	10.9	8.3	6.6	5.3	3.7	2.7	2.1	1.6	1.3
					D(mm)	2.8	5.0	7.8	11.2	15.2	19.9	25.2	31.1	44.8	61.0	79.7	100.8	124.5
SA255S	25 x 5	30	12.8	1020	U(kPa)	63.6	35.8	22.9	15.9	11.7	8.9	7.1	5.7	4.0	2.9	2.2	1.8	1.4
					D(mm)	2.5	4.4	6.9	9.9	13.5	17.6	22.3	27.5	39.6	54.0	70.5	89.2	110.1
SA323P	32 x 3	40	8.4	1070	U(kPa)	58.2	32.7	20.9	14.5	10.7	8.2	6.5	5.2	3.6	2.7	2.0	1.6	1.3
					D(mm)	2.2	3.9	6.1	8.8	11.9	15.6	19.7	24.3	35.0	47.6	62.2	78.8	97.2
SA255P	25 x 5	30	13.3	1080	U(kPa)	80.5	45.3	29.0	20.1	14.8	11.3	8.9	7.2	5.0	3.7	2.8	2.2	1.8
					D(mm)	2.8	5.0	7.8	11.2	15.2	19.9	25.2	31.1	44.8	61.0	79.7	100.8	124.5
SA403P	40 x 3	60	9.2	1130	U(kPa)	61.8	34.8	22.2	15.4	11.3	8.7	6.9	5.6	3.9	2.8	2.2	1.7	1.4
					D(mm)	1.8	3.1	4.9	7.0	9.5	12.4	15.8	19.4	28.0	38.1	49.8	63.0	77.8
SA323P	32 x 3	30	10.6	1140	U(kPa)	79.1	44.5	28.5	19.8	14.5	11.1	8.8	7.1	4.9	3.6	2.8	2.2	1.8
					D(mm)	2.2	3.9	6.1	8.8	11.9	15.6	19.7	24.3	35.0	47.6	62.2	78.8	97.2
SA325P	32 x 5	40	12.9	1210	U(kPa)	96.9	54.5	34.9	24.2	17.8	13.6	10.8	8.7	6.1	4.5	3.4	2.7	2.2
					D(mm)	2.2	3.9	6.1	8.8	11.9	15.6	19.7	24.3	35.0	47.6	62.2	78.8	97.2
SA325S	32 x 5	30	16.0	1240	U(kPa)	109.4	61.5	39.4	27.4	20.1	15.4	12.2	9.8	6.8	5.0	3.8	3.0	2.5
					D(mm)	2.0	3.5	5.5	7.9	10.8	14.1	17.8	22.0	31.7	43.1	56.3	71.3	88.0
SA403P	40 x 3	40	10.1	1260	U(kPa)	90.9	51.1	32.7	22.7	16.7	12.8	10.1	8.2	5.7	4.2	3.2	2.5	2.0
					D(mm)	1.8	3.1	4.9	7.0	9.5	12.4	15.8	19.4	28.0	38.1	49.8	63.0	77.8
SA325P	32 x 5	30	16.5	1300	U(kPa)	131.8	74.1	47.5	33.0	24.2	18.5	14.6	11.9	8.2	6.1	4.6	3.7	3.0
					D(mm)	2.2	3.9	6.1	8.8	11.9	15.6	19.7	24.3	35.0	47.6	62.6	78.8	97.2
SA403P	40 x 3	30	12.8	1350	U(kPa)	123.6	69.5	44.5	30.9	22.7	17.4	13.7	11.1	7.7	5.7	4.3	3.4	2.8
					D(mm)	1.8	3.1	4.9	7.0	9.5	12.4	15.8	19.4	28.0	38.1	49.8	63.0	77.8
SA405P	40 x 5	40	15.7	1430	U(kPa)	151.4	85.2	54.4	37.9	27.8	21.3	16.8	13.6	9.5	7.0	5.3	4.2	3.4
					D(mm)	1.8	3.1	4.9	7.0	9.5	12.4	15.8	19.4	28.0	38.1	49.8	63.0	77.8
SA405S	40 x 5	30	19.8	1480	U(kPa)	179.2	100.8	64.5	44.8	32.9	25.2	19.9	16.1	11.2	8.2	6.3	5.0	4.0
					D(mm)	1.6	2.9	4.5	6.5	8.9	11.6	14.7	18.1	26.1	35.5	46.3	58.7	72.4
SA503P	50 x 3	40	12.2	1490	U(kPa)	142.0	79.9	51.1	35.5	26.1	20.0	15.8	12.8	8.9	6.5	5.0	3.9	3.2
					D(mm)	1.4	2.5	3.9	5.6	7.6	10.0	12.6	15.6	22.4	30.5	39.8	50.4	62.2
SA405P	40 x 5	30	20.2	1530	U(kPa)	206.0	115.9	74.1	51.5	37.8	29.0	22.9	18.5	12.9	9.5	7.2	5.7	4.6
					D(mm)	1.8	3.1	4.9	7.0	9.5	12.4	15.8	19.4	28.0	38.1	49.8	63.0	77.8
SA455P	45 x 5	40	17.5	1560	U(kPa)	191.7	107.8	69.0	47.9	35.2	27.0	21.3	17.3	12.0	8.8	6.7	5.3	4.3
					D(mm)	1.6	2.8	4.3	6.2	8.5	11.1	14.0	17.3	24.9	33.9	44.3	56.0	69.1
SA503P	50 x 3	30	15.6	1600	U(kPa)	193.1	108.6	69.5	48.3	35.5	27.2	21.5	17.4	12.1	8.9	6.8	5.4	4.3
					D(mm)	1.4	2.5	3.9	5.6	7.6	10.0	12.6	15.6	22.4	30.5	39.8	50.4	62.2
SA455P	45 x 5	30	22.6	1670	U(kPa)	260.7	146.6	93.8	65.2	47.9	36.7	29.0	23.5	16.3	12.0	9.2	7.2	5.9
					D(mm)	1.6	2.8	4.3	6.2	8.5	11.1	14.0	17.3	24.9	33.9	44.3	56.0	69.1
SA505P	50 x 5	40	19.2	1690	U(kPa)	236.6	133.1	85.2	59.2	43.5	33.3	26.3	21.3	14.8	10.9	8.3	6.6	5.3
					D(mm)	1.4	2.5	3.9	5.6	7.6	10.0	12.6	15.6	22.4	30.5	39.8	50.4	62.2
SA505P	50 x 5	30	24.9	1810	U(kPa)	321.8	181.0	115.9	80.5	59.1	45.3	35.8	29.0	20.1	14.8	11.3	8.9	7.2
					D(mm)	1.4	2.5	3.9	5.6	7.6	10.0	12.6	15.6	22.4	30.5	39.8	50.4	62.2
SA655P	65 x 5	40	24.5	2050	U(kPa)	399.9	224.9	144.0	100.0	73.5	56.2	44.4	36.0	25.0	18.4	14.1	11.1	9.0
					D(mm)	1.1	1.9	3.0	4.3	5.9	7.7	9.7	12.0	17.2	23.5	30.6	38.8	47.9

ALUMINUM BAR GRATING

Application Display

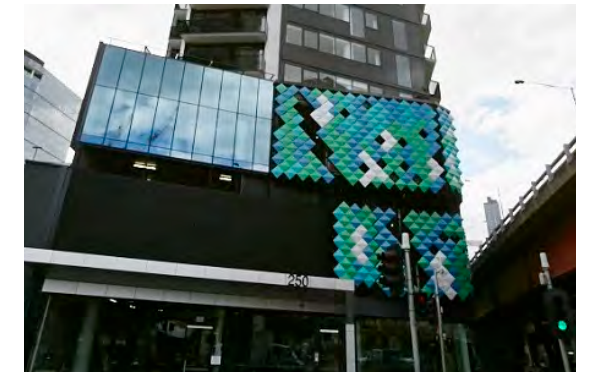


Indoor screen made from black powder coated rectangular aluminum grating that not only divides the office space but also adds a touch of sophistication.

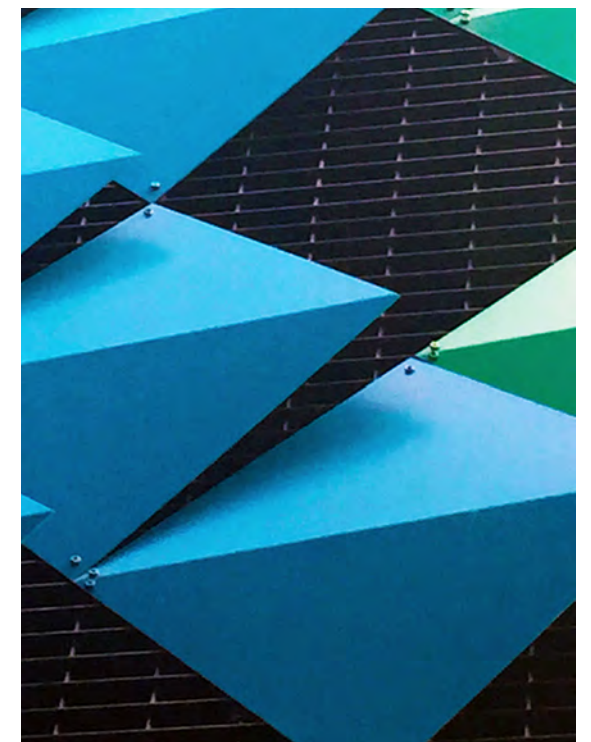


ALUMINUM BAR GRATING

Application Display



Aluminum rectangular bar grating used as part of an architectural facade designed to have decorative plates attached on the surface.



ALUMINUM BAR GRATING

Application Display

Building exterior protection screen made from aluminum rectangular bar grating.



Back porch fence infill made from aluminum rectangular bar grating.



ALUMINUM BAR GRATING

Application Display

Powder coated sun shading panels



Aluminum rectangular bar grating as part of a building exterior configuration



ARCHITECTURAL LOUVER

Sunscreen Louver & Trafficable Louver

As the names suggest: sunscreen louver’s main purpose is to shield sunlight and provide shade; trafficable louver has the additional function of bearing weight. Both types of louvers are versatile in ways of application with ease of installation and low maintenance.



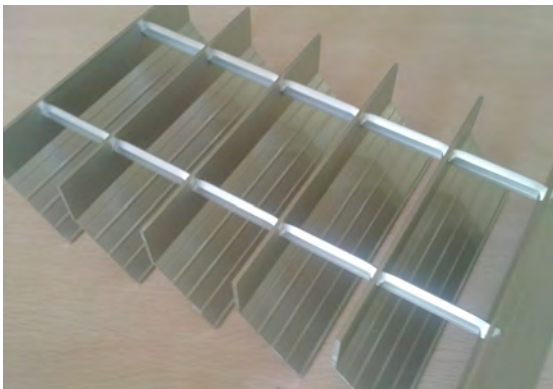
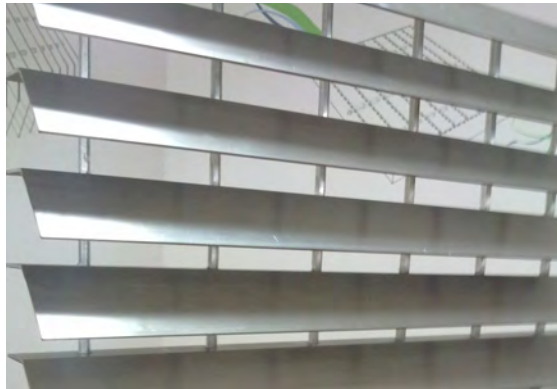
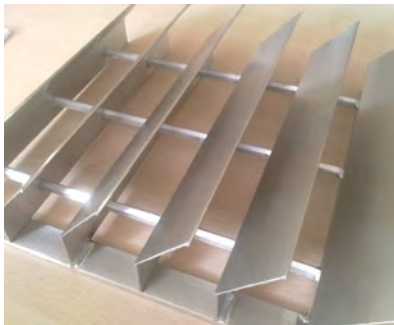
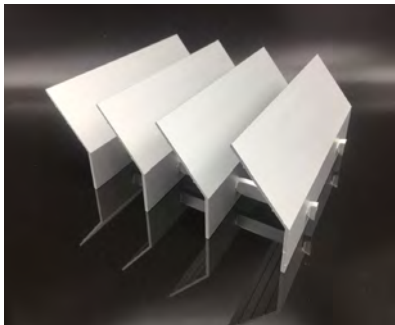
ARCHITECTURAL LOUVER

Sunscreen Louver



Applications		
sunscreen	sunshade	building facade
ventilation	decorative grille	
Surfaces		
flat		
Surface Treatments		
mill finish	anodizing	powder coating

Aluminum sunscreen louver is an environmentally friendly solution to reduce solar glare and conserve energy. It is corrosion resistant and ecologically sound. There are a wide range of profiles offering dynamic solutions to any building structure, existing and new.



ARCHITECTURAL LOUVER

Trafficable Louver



Applications

- sunscreen
- sunshade
- building facade
- ventilation
- decorative grille

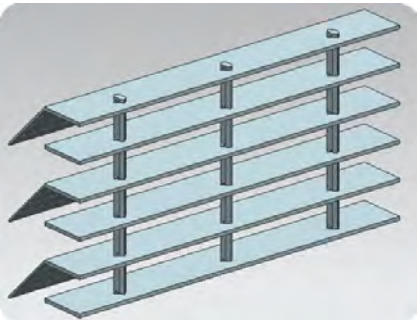
Surfaces

- flat
- serrated

Surface Treatments

- mill finish
- anodizing
- powder coating

Aluminum trafficable louver is an innovative combination of two separate functions in one product. With all the benefits of a sunscreen, it offers a safe access platform for cleaning and maintenance of the surrounding facade and vision panels.



ARCHITECTURAL LOUVER

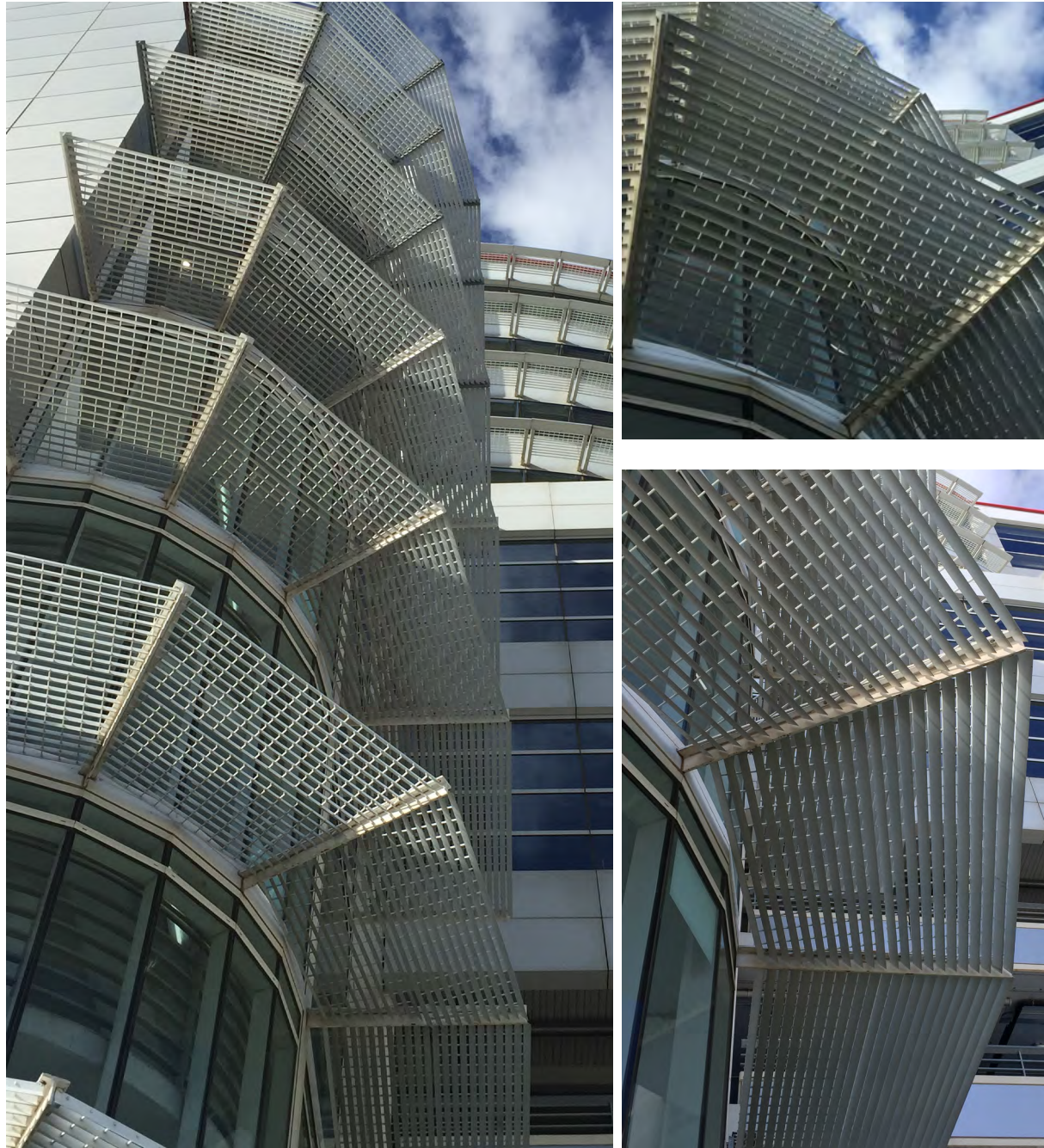
Load Table

Span for louvre															
Type	Kg/m2	Distance between supports (mm) ,(Figures within tables are load pressures in KPa)													
		1200	1400	1600	1800	2000	2200	2400	2600	2800	3000	3200	3400	3600	3800
L203/43	8	2.5	2.0	1.5	1.0	0.75	0.5	-	-	-	-	-	-	-	-
L203/54	9	2.5	2.0	1.5	1.0	0.75	0.5	-	-	-	-	-	-	-	-
L203/60	9	4.0	3.0	2.0	1.5	1.25	0.75	0.5	0.5	-	-	-	-	-	-
L203/80	12	7.5	5.0	3.0	2.5	1.75	1.25	1.0	0.75	0.5	0.5	-	-	-	-
L323/60	13	7.5+	7.5	5.0	3.0	2.5	2.0	1.5	1.25	1.0	0.75	0.5	0.5	-	-
L323/60/100°	13	3.0	2.5	2.0	1.5	1.25	0.75	0.5	0.5	-	-	-	-	-	-
L323/60/160°	13	7.5+	7.5	5.0	4.0	3.0	2.5	1.75	1.5	1.25	1.0	0.75	0.5	-	-
L323/80	14	7.5+	7.5	5.0	3.0	2.5	2.0	1.5	1.25	1.0	0.75	0.5	0.5	-	-
L403/60	14	7.5+	7.5	5.0	4.0	3.0	2.5	1.75	1.5	1.0	0.75	0.75	0.5	0.5	-
LF203/60	13	5.0	3.0	2.5	1.75	1.25	0.75	0.75	0.5	-	-	-	-	-	-
LF323/60	17	7.5+	7.5	5.0	3.5	2.5	1.75	1.5	1.0	0.75	0.75	-	-	-	-
LF403/60	19	7.5+	7.5+	7.5	6.0	5.0	3.5	3.0	2.25	1.75	1.5	1.25	1.0	0.5	0.5

ARCHITECTURAL LOUVER

Application Display

Aluminum sunscreen louver installed on the building exterior that blocks direct sunlight and is aesthetically pleasing.



ARCHITECTURAL LOUVER

Application Display

Aluminum louver as ventilation cover on the rooftop



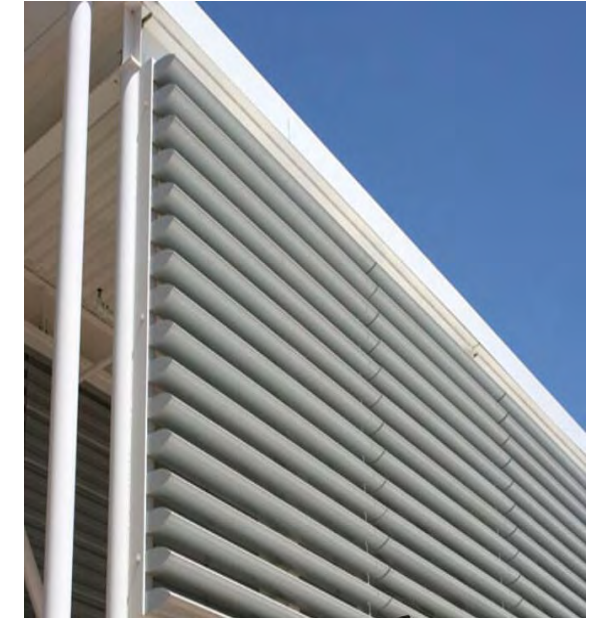
ARCHITECTURAL LOUVER

Application Display



ARCHITECTURAL LOUVER

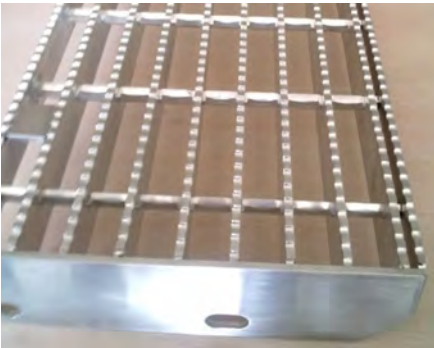
Application Display



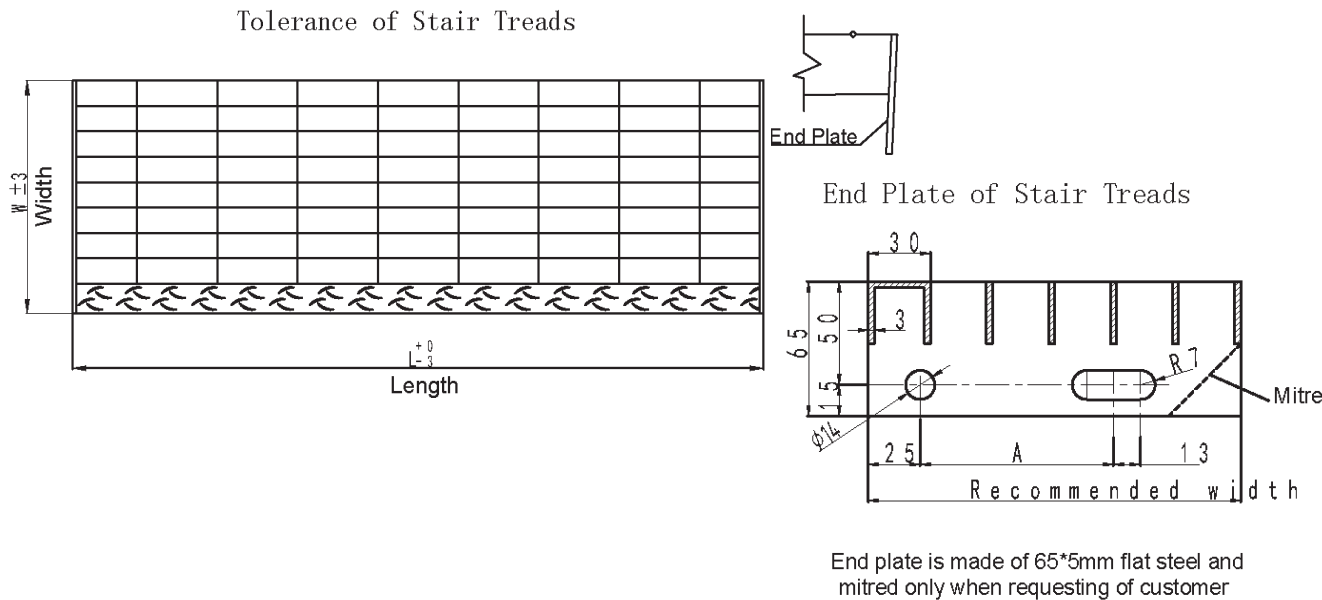
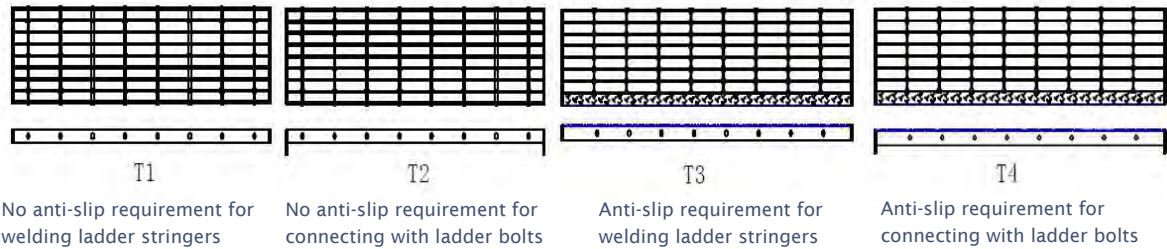
Architectural louver grilles made from extruded aluminum fins



STAIR TREAD



Applications			
ramp	walkway	decking	
flooring	platform	stair	
Types			
T1	T2	T3	T4
Surfaces			
flat	serrated		
Surface Treatments			
mill finish	anodizing	powder coating	



STAIR TREAD

Application Display

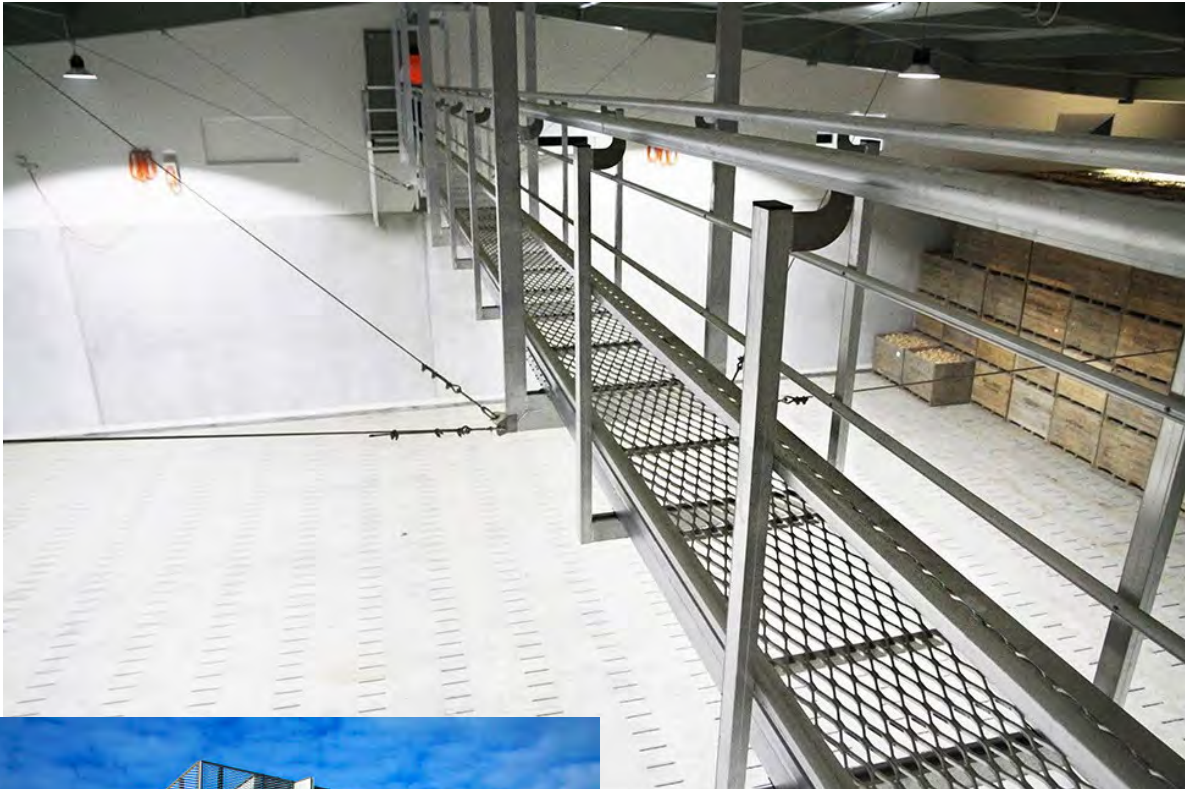
Most platform and walkway applications require stair treads to access and connect various levels of the configuration, and we offer a full range of aluminum stair tread profiles to meet the dynamic market demands. Whether the project requires a standard maintenance access tread or a closer mesh and more pedestrian friendly product, we have the right solution for you.



EXPANDED SERIES

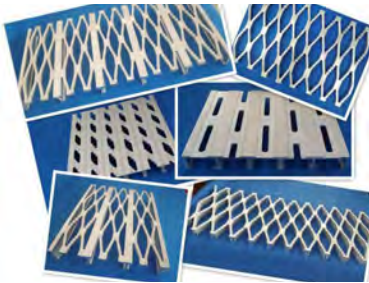
Expanded Walkway & Planking

Safety walkways can be ceiling-hung or supported from the floor or adjacent structures, including racks or mezzanines. Expanded walkway panels can also be installed as part of an architectural facade system.



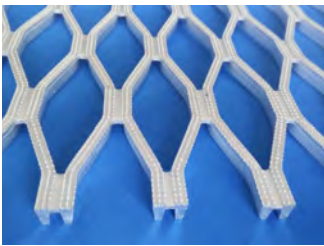
EXPANDED SERIES

Expanded Walkway

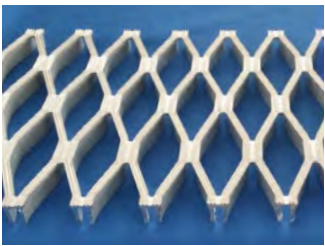


Applications			
platform	fencing	decorative screen	
Patterns			
EWG13mm	EWG22mm	EWG30mm	EWG30/SL
EWG30/ST	EWG40	EWG40/ST	
Surfaces			
striated			
Surface Treatments			
mill finish	anodizing	powder coating	

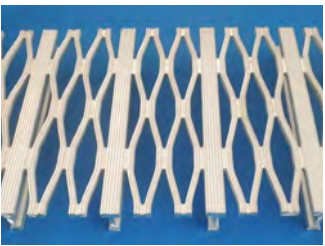
The expanded walkway is the most practical and economical way to assure strength, and safety with its expertly designed patterns and skid-free surface . It is much easier to install by welding or bolting to fit any sizing criteria.



EWG13mm



EWG22mm



EWG30mm



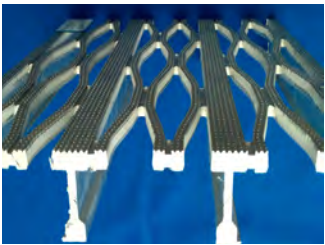
EWG30/SL



EWG30/ST



EWG40



EWG40/ST



Alu Extruded Decking

EXPANDED SERIES

Planking



Applications

ramp	walkway	decking
ventilation cover	platform stair	flooring

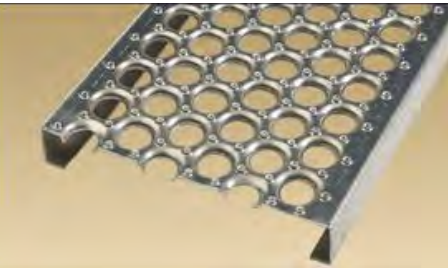
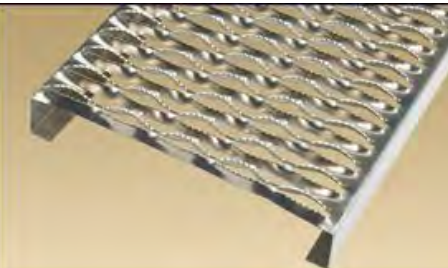
Surfaces

diamond	round	slotted
serrated	rectangular	

Surface Treatments

mill finish	anodizing	powder coating
-------------	-----------	----------------

Aluminum planking is a one-piece rectangular anti-slip grating with punched diamond or round shaped holes or serrated grid. This versatile product is easy to handle, cut, install and maintain making it adaptable in many construction environments.

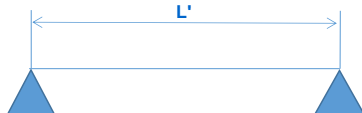


EXPANDED SERIES

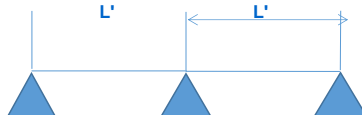
Load Table

SAFETY LOAD TABLE

PANEL 13&22		SPAN 'L'(mm)-SINGLE					
		500	600	700	800	900	1000
EWG13	UDL(kpa)	4.7	2.7	1.5	0.8	0.6	
	DEF(mm)	2.5	3.0	3.5	4.0	4.5	
EWG22	UDL(kpa)	9.4	6.3	4.2	2.9	2.1	1.4
	DEF(mm)	2.5	3.0	3.5	4.0	4.5	4.9



PANEL 13&22		SPAN 'L'(mm)-DOUBLE					
		500	600	700	800	900	1000
EWG13	UDL(kpa)	6.6	3.8	2.1	1.1	0.8	
	DEF(mm)	2.5	3.0	3.5	4.0	4.5	
EWG22	UDL(kpa)	13.2	8.8	5.9	4.1	2.9	2.0
	DEF(mm)	2.5	3.0	3.5	4.0	4.5	4.9



PANEL EWG30		SPAN 'L'(mm)-SINGLE											
		750	900	1050	1200	1350	1500	1650	1800	1950	2100	2250	2400
UDL(kpa)		22.8	13.1	8.2	5.5	3.8	2.8	2.0	1.6	1.2	0.9	0.7	0.6
DEF(mm)		3.7	4.6	5.1	5.9	6.6	7.4	8.2	8.9	9.6	10.4	11.2	11.9
CL(kn)		5.1	3.7	2.7	2.1	1.7	1.3	1.1	0.9	0.8	0.7	0.6	0.5
DEF(mm)		3.5	4.4	5.1	5.9	6.6	7.4	8.2	8.9	9.6	10.4	11.2	11.9

PANEL EWG30		SPAN 'L'(mm)-DOUBLE											
		750	900	1050	1200	1350	1500	1650	1800	1950	2100	2250	2400
UDL(kpa)		26.0	18.7	13.6	10.4	8.2	6.7	4.2	4.2	3.3	2.6	2.1	1.7
DEF(mm)		1.6	2.4	3.2	4.3	5.5	6.7	8.2	8.9	9.6	12.4	11.2	11.8
CL(kn)		6.7	5.5	4.7	4.2	3.6	2.7	2.3	1.9	1.6	1.4	1.2	1.0
DEF(mm)		2.1	3.1	4.3	5.6	6.6	7.4	8.2	8.9	9.6	12.4	11.2	11.8

PANEL EWG30SL		SPAN 'L'(mm)-SINGLE											
		750	900	1050	1200	1350	1500	1650	1800	1950	2100	2250	2400
UDL(kpa)		38.6	28.3	14.0	9.4	6.5	4.7	3.5	2.7	2.2	1.7	1.3	1.1
DEF(mm)		3.7	4.4	5.1	5.9	6.6	7.4	8.2	8.9	9.7	10.4	11.2	11.9
CL(kn)		4.4	3.1	2.2	1.7	1.3	1.0	0.8	0.7	0.6	0.5	0.4	0.3
DEF(mm)		3.7	4.4	5.1	5.9	6.6	7.4	8.2	8.9	9.7	10.4	11.2	11.9

PANEL EWG30SL		SPAN 'L'(mm)-DOUBLE													
		750	900	1050	1200	1350	1500	1650	1800	1950	2100	2250	2400	2550	2770
UDL(kpa)		48.0	33.3	24.4	18.7	14.7	11.9	9.4	7.2	5.7	4.5	3.6	3.0	2.5	2.1
DEF(mm)		1.7	2.5	3.5	4.6	5.8	7.2	8.2	8.9	9.7	10.4	12.2	11.9	12.6	13.4
CL(kn)		5.5	4.6	3.9	3.4	3.0	2.5	2.0	1.7	1.4	1.2	1.1	0.9	0.8	0.7
DEF(mm)		1.9	2.8	3.9	5.1	6.0	7.4	8.2	8.9	9.7	10.4	12.2	11.9	12.6	13.4

PANEL EWG40		SPAN 'L'(mm)-SINGLE											
		750	900	1050	1200	1350	1500	1650	1800	1950	2100	2250	2400
UDL(kpa)		45.4	29.6	18.6	12.4	8.7	6.3	4.7	3.6	2.8	2.2	1.8	1.5
DEF(mm)		3.2	4.4	5.1	5.9	6.6	7.4	8.2	8.9	9.6	10.4	11.2	11.9
CL(kn)		8.4	7.0	6.0	4.6	3.6	2.9	2.4	2.0	1.7	1.4	1.2	1.1
DEF(mm)		2.6	3.7	5.1	5.9	6.6	7.4	8.2	8.9	9.6	10.4	11.2	11.9

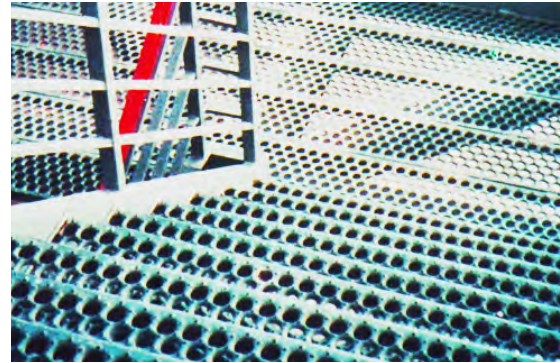
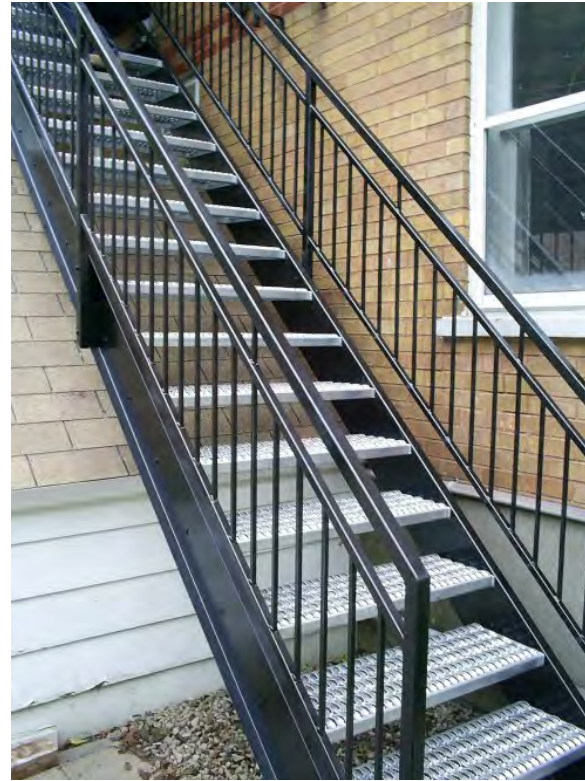
PANEL EWG40		SPAN 'L'(mm)-DOUBLE													
		750	900	1050	1200	1350	1500	1650	1800	1950	2100	2250	2400	2550	2770
UDL(kpa)		45.4	31.5	23.1	18.6	13.9	11.3	9.3	7.8	6.6	5.7	4.9	4.0	3.3	2.8
DEF(mm)		1.2	1.7	2.4	3.2	4.0	5.0	6.1	7.2	8.5	10.0	11.2	11.9	12.6	13.4
CL(kn)		11.2	9.3	8.0	6.9	6.1	5.6	5.1	4.5	3.7	3.1	2.7	2.4	2.1	1.9
DEF(mm)		1.6	2.2	3.1	4.2	5.3	6.6	8.2	8.9	9.6	10.4	11.2	11.9	12.6	13.4

★LOADS SHOWN IN SHADED AREA COMPLIES TO AS 1657 WITH DELECTION OF SPAN/200

★FOR PEDESTRIAN TRAFFIC A 'UDL' OF 2.5 KPA(min) IS REQUIRED

EXPANDED SERIES

Application Display



EXPANDED SERIES

Application Display





Applications Areas			
shipyard	bridgework	power plant	
airport	garden	water treatment plant	
Material			
aluminum	mild steel	stainless steel	
Surface Treatments			
untreated	anodizing	powder coating	galvanizing
electropolishing			

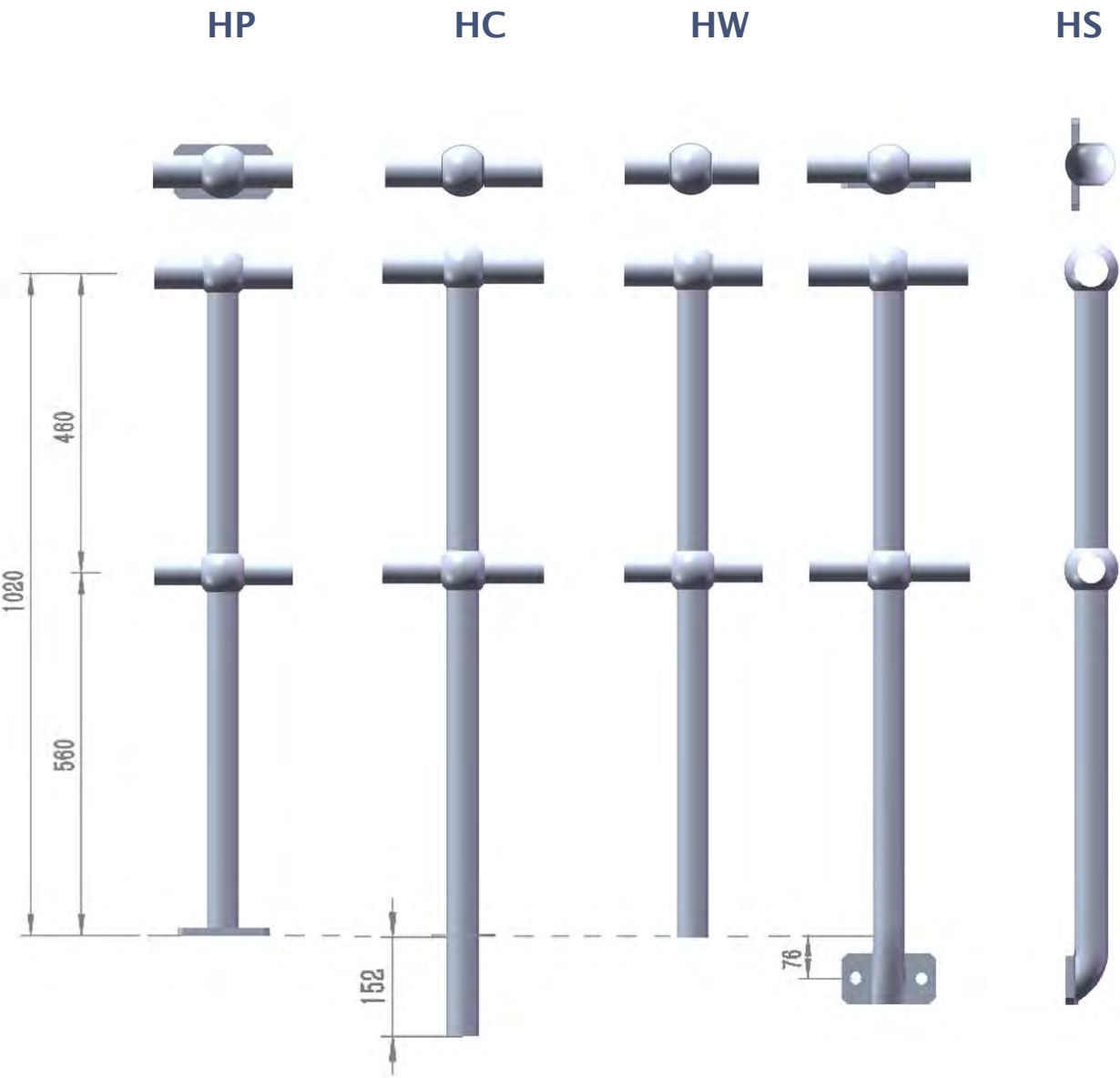
Our stanchion manufactured in accordance with AS1657 adopts a ball joint design that offers both functionality and aesthetics. The handrail system can be installed by welding or bolting and can be easily customized to fit any layout. The handrail stanchion system is used extensively throughout the mining, petro-chemical, mineral processing and other heavy industries.

Ball joint stanchion used as platform safety railing



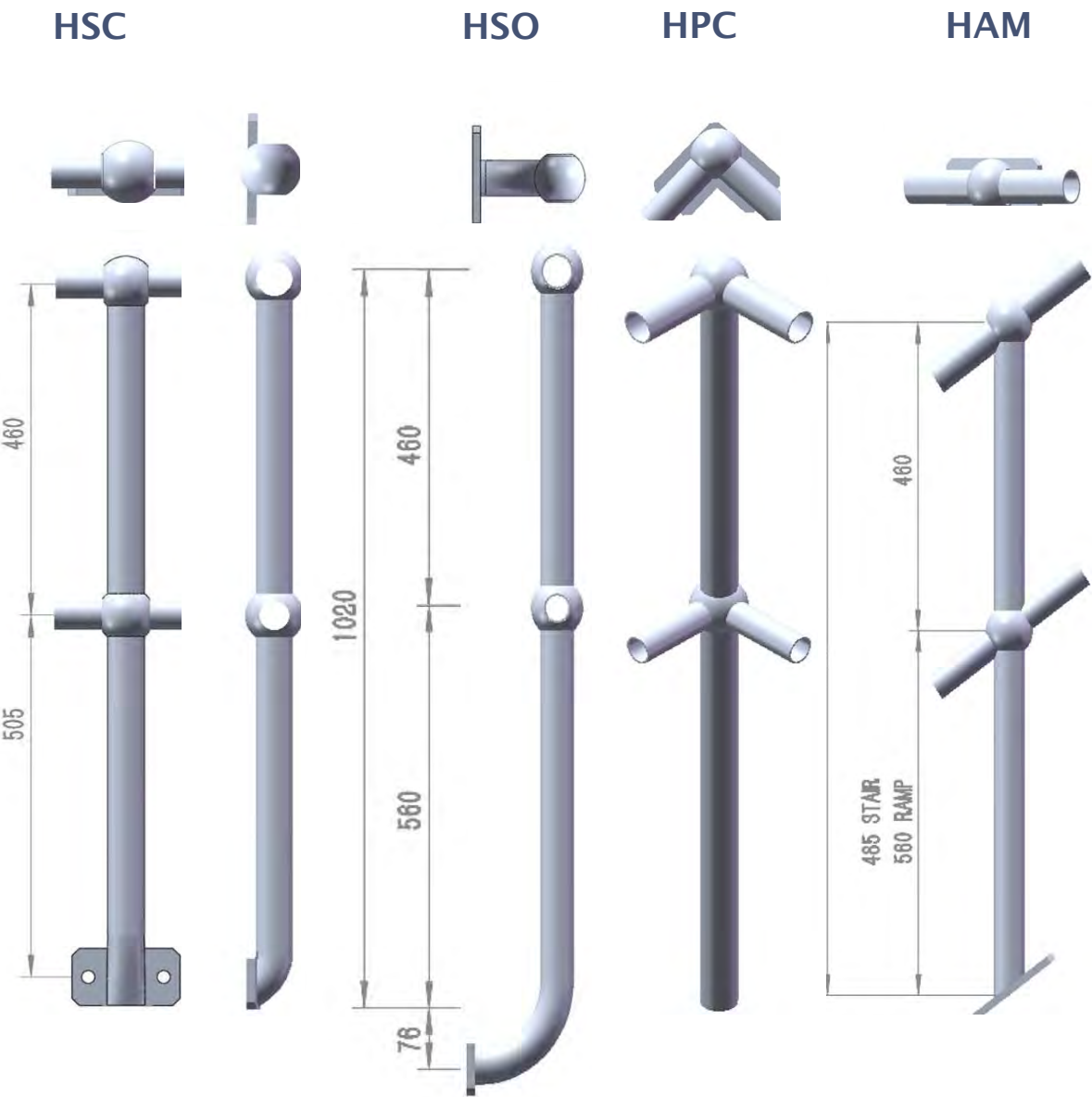
STANCHION

Component Code	Component Name
HP	Platform
HC	Platform Corner
HW	Welded
HS	Side



STANCHION

Component Code	Component Name
HSC	Side Conveyor
HSO	Side Offset
HPC	Platform Corner
HAM	35/38/41/44



STEEL BAR GRATING

Rectangular Bar & V-Shape

Steel bar grating is still the most commonly used material in many industrial applications. It has an excellent strength-to-weight ratio and can be easily fabricated to any configurations. It requires virtually no maintenance and has an inherent anti-slippery property.



STEEL BAR GRATING

Rectangular Bar



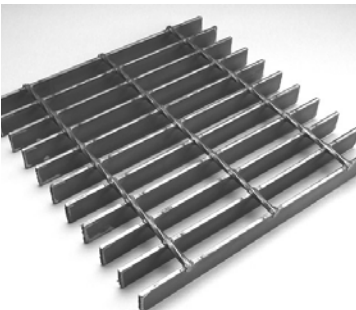
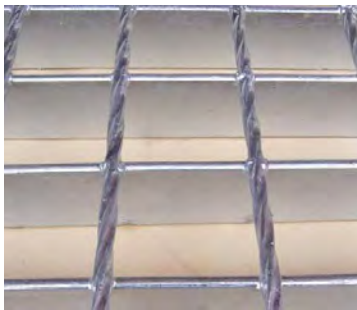
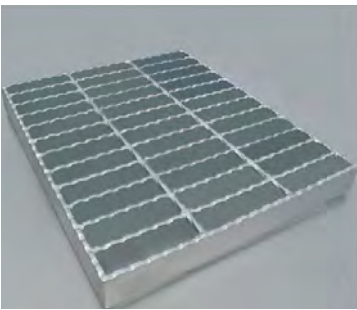
Applications		
railing infill	shelving	fencing
trench grate	platform	walkway
Types		
hand welded	forge welded	
Surfaces		
flat	serrated	
Surface Treatments		
untreated	powder coating	galvanizing

Widely used in power plant, chemical plant, oil refinery, iron and steel works, paper mill, food processing plant, pharmaceutical manufacture, sewage treatment plant, civil engineer projects and other areas, welded steel bar grating is the most popular of all grating types due to its strength, cost efficiency and ease of installation.

hand welded

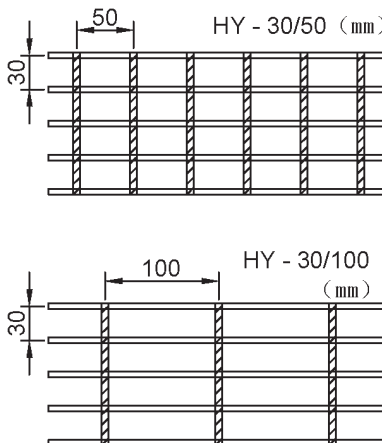
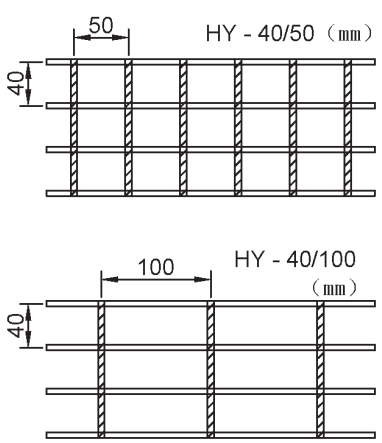
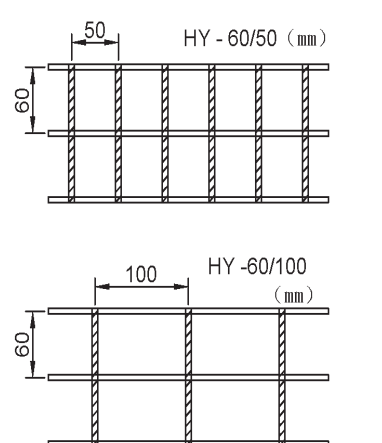


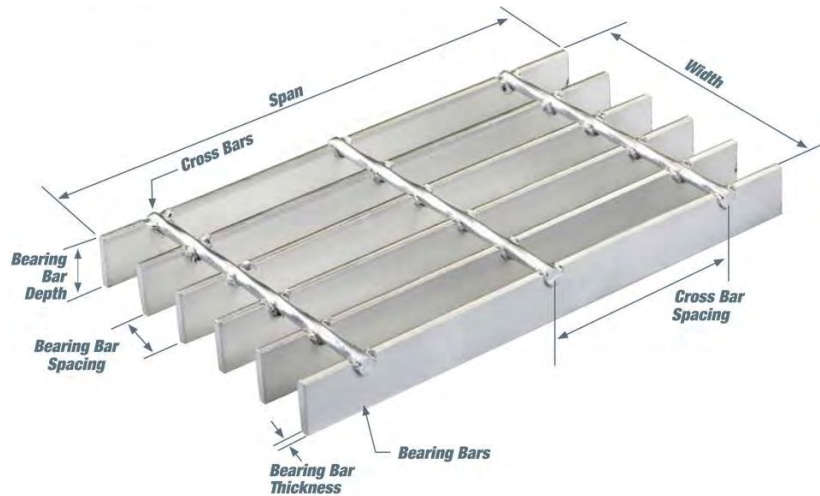
forge welded



STEEL BAR GRATING

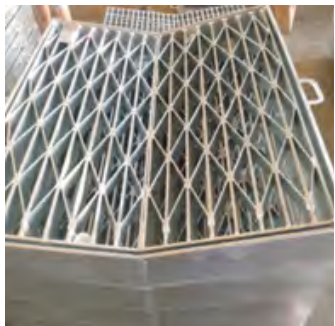
Rectangular Bar

HY-30/50 & HY-30/100	HY-40/50 & HY-40/100	HY-60/50 & HY-60/100
Steel grating with 30mm bearing bar pitch is the most widely used in industrial areas. It maintains the highest resistance to impulsive force	The 40mm bearing bar pitch steel grating is one of the most economical with the lightest weight, a perfect choice for projects with a small clear span	The 60mm bearing bar pitch steel grating is a popular choice for fabrication plant, transportation terminals and other areas of mining.
		

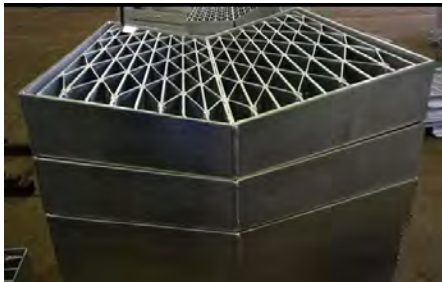


STEEL BAR GRATING

V Shape



Applications	drainage cover	
Types		
V-1 grate & frame	V-1 double grate & frame	
V-2 grate & frame	V-2 double grate & frame	
V-3 grate & frame	customized	
Surface Treatments		
untreated	powder coating	galvanizing



Code	Length of Frame	Length of Grate	Width of Frame	Width of Grate	Height of Frame	Height of Grate	Clear Opening
V-1	850	825	755	715	100	90	711
V-1 Double	1720	825	765	720	100	90	711
V-2	860	830	765	720	100	90	711
V-2 Double	1720	830	765	720	100	90	711
V-3	202.4+190	1000	982	63	/	369*900	

STEEL BAR GRATING

Application Display

STEEL BAR GRATING

Load Table

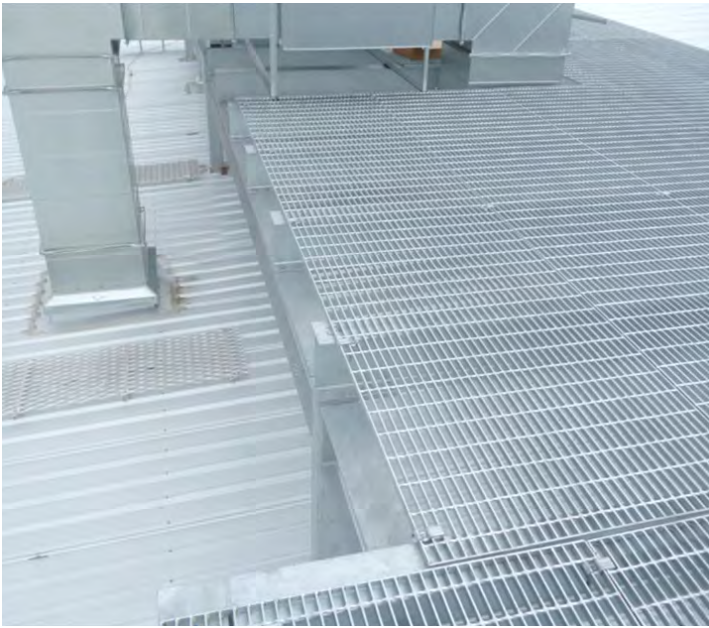


Table of safe load & general type of steel grating with bearing bar pitch at 30 mm																			
TYPE	Width of bearing bar	Thickness of bearing bar	kg/m² Nom. Weight		Clear Span, mm														
					200	400	600	800	1000	1200	1400	1600	1800	2000	2200	2400	2600	2800	3000
HYG203/30/50	20	3	24.5	U	226.00	56.00	25.00	14.00	9.00	-	-	-	-	-	-	-	-	-	-
				D	0.34	1.37	3.10	5.53	8.76	-	-	-	-	-	-	-	-	-	-
HYG203/30/100		21.5	C	22.00	11.00	7.00	5.00	4.00	-	-	-	-	-	-	-	-	-	-	
			D	0.27	1.07	2.32	3.98	6.30	-	-	-	-	-	-	-	-	-	-	
HYG205/30/50	20	5	36.0	U	377.00	94.00	41.00	23.00	15.00	10.00	-	-	-	-	-	-	-	-	
				D	0.34	1.37	3.05	5.44	8.73	12.21	-	-	-	-	-	-	-	-	-
HYG205/30/100		33.0	C	37.00	18.00	12.00	9.00	7.00	6.00	-	-	-	-	-	-	-	-	-	
			D	0.27	1.05	2.39	4.28	6.57	9.85	-	-	-	-	-	-	-	-	-	
HYG253/30/50	25	3	29.2	U	354.00	88.00	39.00	22.00	14.00	9.00	-	-	-	-	-	-	-	-	
				D	0.28	1.10	2.47	4.43	6.94	9.35	-	-	-	-	-	-	-	-	-
HYG253/30/100		26.2	C	35.00	17.00	11.00	8.00	7.00	5.00	-	-	-	-	-	-	-	-	-	
			D	0.22	0.85	1.86	3.24	5.58	7.00	-	-	-	-	-	-	-	-	-	
HYG255/30/50	25	5	43.3	U	590.00	147.00	65.00	36.00	23.00	16.00	12.00	-	-	-	-	-	-	-	
				D	0.28	1.10	2.47	4.35	6.82	9.92	13.90	-	-	-	-	-	-	-	-
HYG255/30/100		40.3	C	59.00	29.00	19.00	14.00	11.00	9.00	8.00	-	-	-	-	-	-	-	-	
			D	0.22	0.87	1.93	3.39	5.25	7.50	10.71	-	-	-	-	-	-	-	-	
HYG323/30/50	32	3	35.7	U	580.00	145.00	64.00	36.00	23.00	16.00	11.00	9.00	-	-	-	-	-	-	
				D	0.21	0.86	1.93	3.45	5.41	7.85	10.09	14.19	-	-	-	-	-	-	-
HYG323/30/100		32.7	C	58.00	29.00	19.00	14.00	11.00	9.00	8.00	7.00	-	-	-	-	-	-	-	
			D	0.17	0.69	1.53	2.69	4.16	5.93	8.44	11.15	-	-	-	-	-	-	-	
HYG325/30/50	32	5	53.8	U	967.00	241.00	107.00	60.00	38.00	26.00	19.00	15.00	11.00	-	-	-	-	-	
				D	0.22	0.86	1.94	3.44	5.35	7.64	10.42	14.13	16.81	-	-	-	-	-	-
HYG325/30/100		50.8	C	96.00	48.00	32.00	24.00	19.00	16.00	13.00	12.00	10.00	-	-	-	-	-	-	
			D	0.17	0.68	1.55	2.76	4.30	6.30	8.21	11.40	13.73	-	-	-	-	-	-	
HYG403/30/50	40	3	43.2	U	906.00	226.00	100.00	56.00	36.00	25.00	18.00	14.00	11.00	-	-	-	-	-	
				D	0.17	0.69	1.54	2.74	4.32	6.25	8.39	11.2	14.21	-	-	-	-	-	-
HYG403/30/100		40.2	C	90.00	45.00	30.00	22.00	18.00	15.00	12.00	11.00	10.00	-	-	-	-	-	-	
			D	0.14	0.55	1.24	2.16	3.46	5.02	6.44	8.87	11.59	-	-	-	-	-	-	
HYG405/30/50	40	5	65.8	U	1511.00	377.00	167.00	94.00	60.00	41.00	30.00	23.00	18.00	15.00	-	-	-	-	
				D	0.17	0.69	1.54	2.76	4.31	6.14	8.37	11.02	13.92	17.80	-	-	-	-	-
HYG405/30/100		62.8	C	151.00	75.00	50.00	37.00	30.00	25.00	21.00	18.00	16.00	15.00	-	-	-	-	-	
			D	0.14	0.55	1.23	2.17	3.46	5.01	6.73	8.69	11.10	14.39	-	-	-	-	-	
HYG503/30/50	50	3	52.5	U	1416.00	354.00	157.00	88.00	56.00	39.00	28.00	22.00	17.00	14.00	11.00	-	-	-	
				D	0.14	0.55	1.24	2.20	3.43	4.97	6.65	8.95	11.16	14.09	16.37	-	-	-	-
HYG503/30/100		49.5	C	141.00	70.00	47.00	35.00	28.00	23.00	20.00	17.00	15.00	14.00	12.00	-	-	-	-	
			D	0.11	0.44	0.99	1.75	2.75	3.92	5.45	6.97	8.82	11.37	13.14	-	-	-	-	
HYG505/30/50	50	5	80.8	U	2361.00	590.00	262.00	147.00	94.00	65.00	48.00	36.00	29.00	23.00	19.00	16.00	-	-	
				D	0.14	0.55	1.24	2.20	3.45	4.97	6.82	8.78	11.39	13.86	16.88	20.28	-	-	-
HYG505/30/100		77.8	C	236.00	118.00	78.00	59.00	47.00	39.00	33.00	29.00	26.00	23.00	21.00	19.00	-	-	-	
			D	0.11	0.44	0.99	1.77	2.77	3.99	5.39	7.11	9.14	11.18	13.70	16.26	-	-	-	
HYG555/30/50	55	5	88.3	U	2856.00	714.00	317.00	178.00	114.00	79.00	58.00	44.00	35.00	28.00	23.00	19.00	16.00	-	
				D	0.13	0.50	1.13	2.00	3.14	4.53	6.19	8.04	10.30	12.63	15.29	18.03	21.08	-	-
HYG555/30/100		85.3	C	285.00	142.00	95.00	71.00	57.00	47.00	40.00	35.00	31.00	28.00	25.00	23.00	21.00	-	-	
			D	0.10	0.40	0.90	1.60	2.52	3.60	4.89	6.43	8.16	10.18	12.21	14.70	17.24	-	-	
HYG605/30/50	60	5	95.8	U	3400.00	850.00	377.00	212.00	136.00	94.00	69.00	53.00	41.00	34.00	28.00	23.00	20.00	17.00	
				D	0.11	0.46	1.03	1.84	2.89	4.15	5.66	7.45	9.28	11.78	14.28	16.73	20.16	23.23	-
HYG605/30/100		92.8	C	340.00	170.00	113.00	85.00	68.00	56.00	48.00	42.00	37.00	34.00	30.00	28.00	26.00	24.00	-	
			D	0.09	0.37	0.83	1.48	2.31	3.30	4.52	5.93	7.48	9.49	11.23	13.71	16.31	18.98	-	
HYG655/30/50	65	5	103.3	U	3890.00	997.00	443.00	249.00	159.00	110.00	81.00	62.00	49.00	39.00	32.00	27.00	23.00	20.00	
				D	0.11	0.42	0.95	1.70	2.65	3.81	5.22	6.84	8.70	10.61	12.82	15.40	18.18	21.40	24.18
HYG655/30/100		100.3	C	399.00	199.00	133.00	99.00	79.00	66.00	57.00	49.00	44.00	39.00	36.00	33.00	30.00	28.00	26.00	
			D	0.08	0.34	0.76	1.35	2.11	3.06	4.21	5.43	6.98	8.54	10.56	12.65	14.75	17.33	19.97	